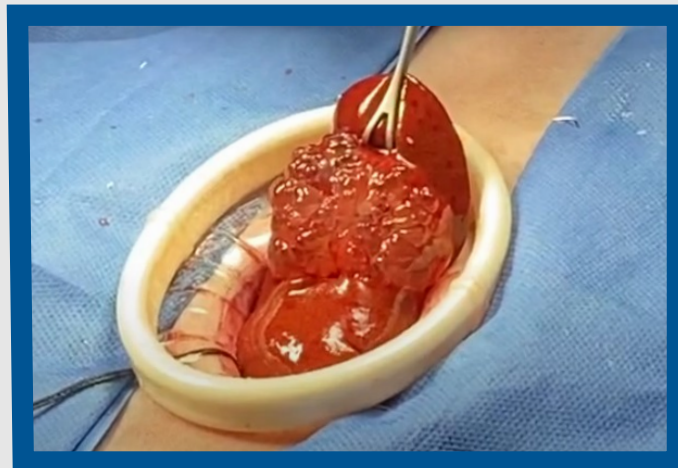


MINIMALLY INVASIVE BIOPSY IN CATS



Gastrointestinal and liver disease often present a dilemma for cats. Definitive diagnosis typically requires a tissue biopsy, but common biopsy techniques pose numerous obstacles for these older and potentially fragile individuals. Endoscopic biopsies are limited by location as well as the inability to obtain full-thickness samples, and laparoscopy can be limiting in smaller individuals. Although excellent samples can be obtained from a surgical approach, legitimate concerns about extended anesthesia, recovery, and hospitalization times can lead to hesitation to perform biopsies resulting in empirical treatment alone. MISCA's solution is the wound retraction device which allows access to the entire intestinal tract through a 3-4 cm incision. Additionally, most cats can go home the same day! The wound retraction device can be used for problems in both the chest and abdominal cavities.



Laparoscopic liver biopsy

Wound Retraction Device

- Gastrointestinal biopsy
- Lymph node biopsy
- Foreign body retrieval
- Mass resection or biopsy

MISCASPECIALTYVET.COM