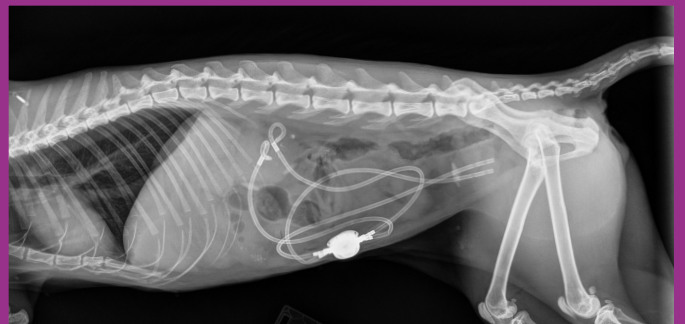
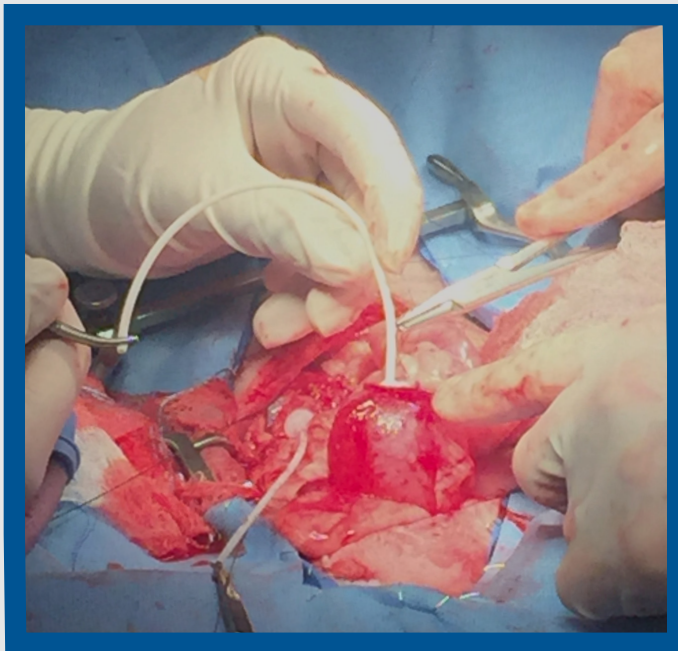


STONES



All stones are not created equal. At MISCA, we believe that each stone should be respected for its composition and should be treated accordingly. Careful analysis of a routine workup (bloodwork, x-rays, urinalysis and culture) will often provide enough information to predict the make-up of a stone and allow careful planning of the best approach to stone management, treatment AND prevention. There are many minimally invasive options for stone management. MISCA's collaborative approach to urolithiasis results in less pain, shorter recovery times and better outcomes.



Options beyond cystotomy/ureterotomy:

- Dissolution
- Voiding urohydropulsion
- Percutaneous cystolithotomy
- Ureteral stent placement
- Subcutaneous ureteral bypass

MISCASPECIALTYVET.COM