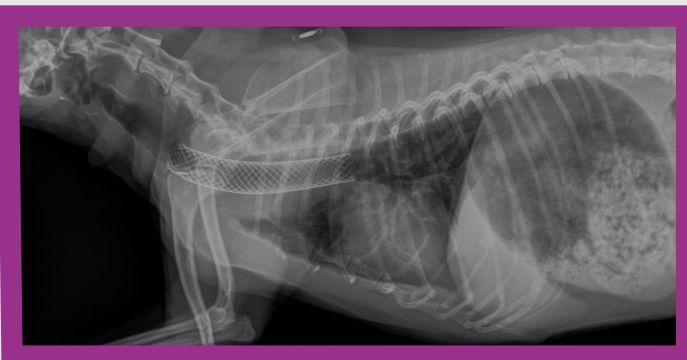


TRACHEAL COLLAPSE



Tracheal collapse is a progressive disease of the cartilages of the airway. Although it is typically an irreversible, progressive condition in small breed dogs, many pets can be managed medically long-term. Tracheal stents can be placed in dogs with severe disease that progresses significantly despite medical management. Tracheal stents are not a cure for tracheal collapse, will not replace medical management, and will not prevent the cough resulting from tracheal collapse. A tracheal stent can reduce life-threatening episodes of cough and collapse resulting from this condition.



Medical management:

- Cough suppressants
- Corticosteroids
- +/- bronchodilators
- +/- antibiotics
- Sedatives

- Reduces episodes of collapse
- Augments medical management
- No incision required

- Can fracture/break
- Can promote fibrosis and/or infection

MISCASPECIALTYVET.COM